



Gebesa | CREATING AMAZING SPACES

SEATING

4

Executive Chairs

36

Medium-Back Chairs

76

Taks Chairs

86

Guest Chairs

112

Multipurpose Chairs

152

Lounge & Collaborative

164

Gamer

172

Sofas



EXECUTIVE CHAIRS

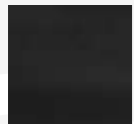


GANT

FEATURES

- High-strength, durable mesh back with bonded-leather headrest
- Knee-tilt mechanism
- Lumbar support
- Height-and pivot-adjustable arms
- Adjustable headrest and seat height
- Aluminum base

Available colors:



Black fabric seat

Options:



Executive



Medium-back

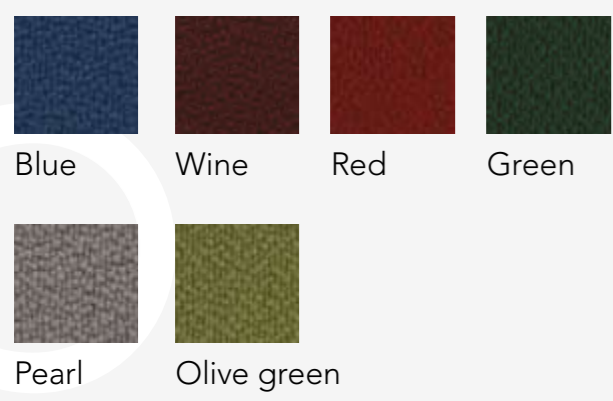


QUO

FEATURES

- Ergonomic, high mesh backrest with adjustable padded headrest
- Adjustable lumbar support
- Adjustable 3D-type arms
- Height-adjustable seat with pneumatic piston
- Anti-shock, locking level with button for activating slider in different positions
- Locking pneumatic piston with extra locking lever for adjusting backrest angle
- Dimensions: 26" W x 26" D x 48" H
- Maximum resistance weight: 287 lbs.

Available fabric colors for seat:



Options:



QUO

FEATURES

- Ergonomic, high mesh backrest with adjustable padded headrest
- Adjustable lumbar support
- Adjustable 3D-type arms
- Height-adjustable seat with pneumatic piston
- Anti-shock, locking level with button for activating slider in different positions
- Locking pneumatic piston with extra locking lever for adjusting backrest angle
- Dimensions: 26" W x 26" D x 48" H
- Maximum resistance weight: 287 lbs.

Options:



Executive



Medium-back





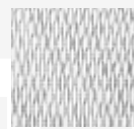
TRENT EXECUTIVE CHAIR

TRENT

FEATURES

- Ratchet back, molded foam suspension seat
- 3-position locking synchro-tilt mechanism
- Height-adjustable backrest
- Lumbar support
- Seat slider
- Height-and pivot-adjustable arms
- Adjustable seat height
- Nylon base
- Dimensions: 30.3" W x 25.5" D x47.2" H
- Maximum resistance weight: 250 lbs.

Available colors:



Black mesh



SNAP

FEATURES

- Ergonomic design
- High back with adjustable soft-mesh headrest
- Orbital oscillation of seat and backrest
- Adjustable lumbar support
- Anti-shock lever with button for activating slider in different positions
- Reclining mechanism with tilt-tension regulator and lock
- 4D-type adjustable cast aluminum arms
- Dimensions: 24" W x 24" D x 45" H
- Maximum resistance weight: 308 lbs.

Available colors:



DILLON

FEATURES

- Ergonomic design
- High backrest with adjustable headrest
- Lumbar support
- 4D-type adjustable arms
- Polished aluminum base
- Pressurized nitrogen pneumatic piston with locking at different heights and recline levels
- Dimensions: 26" W x 26" D x 51" H
- Maximum resistance weight: 264 lbs.



DILLON

FEATURES

- Ergonomic design
- High backrest with adjustable headrest
- Lumbar support
- 4D-type adjustable arms
- Polished aluminum base
- Pressurized nitrogen pneumatic piston with locking at different heights and recline levels
- Dimensions: 26" W x 26" D x 51" H
- Maximum resistance weight: 264 lbs.





LOFT EXECUTIVE CHAIR

LOFT

FEATURES

- Bonded leather back and seat
- Center-tilt mechanism
- Chromed fixed arms
- Adjustable seat height
- Aluminum base
- Dimensions: 23.6" W x 25.9" D x 35.4" H
- Maximum resistance weight: 220 lbs.

Available colors:

- Vinyl category A
- Vinyl category B (5% upcharge)

Options:



Executive



Medium-back



Guest



GOETZ

FEATURES

- High back
- Knee-tilt mechanism
- Reclining with tension regulator and locking lever at different heights
- Structure in polished aluminum finish
- Brown genuine Italian leather seat and backrest
- Dimensions: 23.6" W x 23.6" D x 44.1" H
- Maximum resistance weight: 286.6 lbs.

Available colors:



Light brown

Options:



Executive



Medium-back



Guest



MESH

FEATURES

- High-strength mesh back, fabric seat
- Synchro-tilt mechanism
- Lumbar support
- Height-adjustable arms
- Adjustable seat height
- Nylon base
- Dimensions: 26.4" W x 23.6" D x 44.7-47.8" H

Available colors:



Black fabric seat

- Fabric categories A, B (7% upcharge)
- Fabric categories C, D (10% upcharge)
- Vinyl category A (15% upcharge)
- Vinyl category B (20% upcharge)





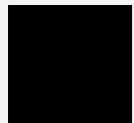
DALI EXECUTIVE CHAIR

DALÍ

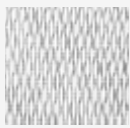
FEATURES

- Center-tilt mechanism
- Flexible suspension back and seat
- Polypropylene frame
- Fixed arms
- Adjustable seat height
- Nylon base
- Dimensions: 23" W x 19" D x 35.4"-39" H
- Maximum resistance weight: 250 lbs.

Available colors:



Black bonded leather



Gray mesh



COMFORT

FEATURES

- Center-tilt/synchro-tilt mechanism available
- Fixed arms made of polypropylene
- Adjustable seat height
- Nylon base
- Dimensions: 22" W x 20" D x 45" H
- Maximum resistance weight: 330.6 lbs.

Available colors:

- Fabric and vinyl category A
- Fabric and vinyl category B (10% upcharge)

Options:



Executive



Medium-back



Guest





MEDIUM-BACK CHAIRS

MEDIUM-BACK CHAIRS



QUO

FEATURES

- Ergonomic, high mesh backrest with adjustable padded headrest
- Adjustable lumbar support
- Adjustable 3D- type arms
- Height-adjustable seat with pneumatic piston
- Anti-shock, locking lever with button for activating slider in different positions
- Dimensions: 26" W x 26" D x 47" H
- Maximum resistance weight: 287 lbs.

Available fabric colors for seat:

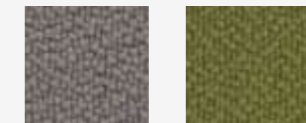


Blue

Wine

Red

Green



Pearl

Olive green

Options:



Executive



Medium-back



QUO

FEATURES

- Ergonomic, high mesh backrest with adjustable padded headrest
- Adjustable lumbar support
- Adjustable 3D-type arms
- Height-adjustable seat with pneumatic piston
- Anti-shock, locking lever with button for activating slider in different positions
- Dimensions: 26" W x 26" D x 47" H
- Maximum resistance weight: 287 lbs.

Options:



Executive



Medium-back



LOFT

FEATURES

- Bonded leather back and seat
- Center-tilt mechanism
- Chromed fixed arms
- Adjustable seat height
- Aluminum base

Available colors:

- Vinyl category A
- Vinyl category B (5% upcharge)

Options:



Executive



Medium-back



Guest



GOETZ MEDIUM-BACK CHAIR

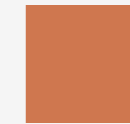


GOETZ

FEATURES

- Medium back
- 5-point pentagonal star base
- Knee-tilt mechanism
- Reclining with tension regulator and locking lever at different heights
- Structure in polished aluminum finish
- Brown genuine Italian leather seat and backrest
- Dimensions: 23.6" W x 23.6" H x 33-38" D
- Maximum resistance weight: 286.6 lbs.

Available colors:



Light brown

Options:



Executive



Medium-back



Guest

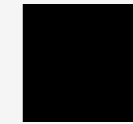


GANT

FEATURES

- High-strength durable mesh, bonded leather seat
- Knee-tilt mechanism
- Lumbar support
- Height- and pivot-adjustable arms
- Adjustable seat height
- Aluminum base
- Dimensions: 26" W x 20" D x 52" H

Available colors:



Black fabric seat

Options:



Executive



Medium-back



SKY

FEATURES

- Mesh back with built-in lumbar support
- Molded foam seat
- 1-position locking synchro-tilt mechanism
- Height-adjustable backrest and arms
- Adjustable seat height
- Nylon base
- Dimensions:
19.6" W x 26.3" D x 37.6" - 43.9" H
- Maximum resistance weight: 300 lbs.

Available colors:



Black



VERA MEDIUM-BACK CHAIR



VERA

FEATURES

- High back
- Lumbar support
- Folding-type arms
- Synchro mechanism with actuation lever and pneumatic piston lock
- Dimensions: 26" W x 26" D x 42" H
- Maximum resistance weight: 286 lbs.

Available colors:



Blue

Wine

Red

Green



Pearl

Olive green

Options:



Medium-back



Guest

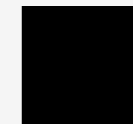


VERA

FEATURES

- High back
- Lumbar support
- Folding-type arms
- Synchro mechanism with actuation lever and pneumatic piston lock
- Dimensions: 26" W x 26" D x 42" H
- Maximum resistance weight: 286 lbs.

Available colors:



Black

Options:



Medium-back



Guest



KIBO

FEATURES

- Ergonomic design
- High back
- Nitrogen gas pressurized pneumatic piston with locking at different heights and recline levels
- Reclining mechanism with tilt-tension regulator and lock
- Dimensions: 24" W x 24" D x 35-38" H
- Maximum resistance weight: 220 lbs.

Available fabric colors for seat:

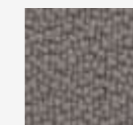


Blue

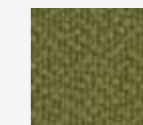
Wine

Red

Green



Pearl



Olive green



KIBO

FEATURES

- Ergonomic design
- High back
- Nitrogen gas pressurized pneumatic piston with locking at different heights and recline levels
- Reclining mechanism with tilt-tension regulator and lock
- Dimensions: 24" W x 24" D x 35-38" H
- Maximum resistance weight: 220 lbs.



WICKER MEDIUM-BACK CHAIR

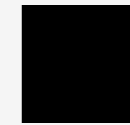


WICKER

FEATURES

- 5-point pentagonal star base
- Nitrogen gas pneumatic piston lifting system
- Pneumatic piston locking mechanism at different heights with actuation lever
- Plywood back frame and arms
- Soft black leather upholstery
- Dimensions: 24" W x 24" D x 37.2" H
- Maximum resistance weight: 264.5 lbs.

Available colors:



Black

Options:



Medium-back



Guest



HALI

FEATURES

- Mesh back with built-in lumbar support, molded foam seat
- 3-position locking synchro-tilt mechanism
- Seat slider
- Height- and pivot-adjustable arms
- Adjustable seat height
- Nylon base
- Dimensions: 28.7" W x 23.8" D x 40.9" H
- Maximum resistance weight: 250 lbs.

Available colors:



Black



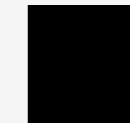


INDI

FEATURES

- Mesh back and mesh upholstered seat
- Center-tilt mechanism
- Adjustable seat height
- Nylon base
- Dimensions: 24.8" W x 24" D x 41" H

Available colors:



Black

- Fabric categories A, B (7% upcharge)
- Fabric categories C, D (10% upcharge)
- Vinyl category A (15% upcharge)
- Vinyl category B (20% upcharge)

Options:



Medium-back



Guest



SPIDER MEDIUM-BACK CHAIR



SPIDER

FEATURES

- Mesh back and mesh upholstered seat
- Weight activated mechanism
- Adjustable seat height
- Nylon base
- Dimensions: 24.8" W x 24" D x 37" H
- Maximum resistance weight: 224 lbs.

Available colors:



Black

- Fabric categories A,B (7% upcharge)
- Fabric categories C, D (10% upcharge)
- Vinyl category A (15% upcharge)
- Vinyl category B (20% upcharge)



COMFORT

FEATURES

- Center-tilt mechanism
- Fixed arms
- Adjustable seat height
- Nylon base
- Dimensions: 22" W x 18.7" D x 39.7" H
- Maximum resistance weight: 330.6 lbs.

Available colors:

- Fabric and vinyl category A
- Fabric and vinyl category B (10% upcharge)

Options:



Executive



Medium-back



Guest



TASK CHAIRS

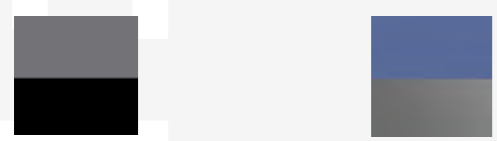
TASK
CHAIRS

ENEAS

FEATURES

- Low back
- Nitrogen gas pneumatic piston lifting system
- Pneumatic piston locking mechanism at different heights
- Actuation lever
- Polished aluminum arms
- Dimensions: 26" W x 26" D x 35.8" H
- Maximum resistance weight: 352.7 lbs.

Available colors:



Gray padded with black matte aluminum base

Blue padded with gray matte aluminum base

Options:



Task



Guest



ARROW

FEATURES

- Mesh mid-back and over contoured foam seat
- Center-tilt mechanism
- Fixed arms
- Adjustable seat height
- Nylon base
- Dimensions:
24.25" W x 22.25" D x 34.75"-39" H
- Maximum resistance weight: 250 lbs.

Available colors:



Black



ARROW

SYRIS

FEATURES

- Mesh mid-back and over contoured foam seat
- Center-tilt mechanism
- Fixed arms
- Adjustable seat height
- Nylon base
- Dimensions:
24.5" W x 23" D x 36" - 40" H
- Maximum resistance weight: 250 lbs.

Available colors:



Black



Gray

SYRIS





COMFORT

OFFICE & DESK CHAIR

- Arm options: "D" polypropylene arms, chromed or armless
- Base options: Nylon or chromed
- Back and height adjustable
- Optional: backrest or with casters

Available colors:

- Fabric and vinyl category A
- Fabric and vinyl category B (10% upcharge)

STOOL

- Arm options: Fixed, "D" polypropylene arms, chromed or armless
- Nylon base
- Optional: backrest, fixed or with casters

Available colors:

- Fabric and vinyl category A
- Fabric and vinyl category B (10% upcharge)

ADJUSTABLE STOOL

- Optional: backrest, no backrest, fixed or with casters



OFFICE CHAIR



DESK CHAIR



STOOL



ADJUSTABLE STOOL



GUEST CHAIRS

G
D
E
S
I



LOFT

FEATURES

- Bonded leather back and seat
- Chromed fixed arms
- Chromed steel sled base
- Dimensions: 25.1" W x 26.7" D x 27.5" H
- Maximum resistance weight: 220 lbs.

Available colors:

- Vinyl Category A
- Vinyl Category B (5% upcharge)

Options:



Executive



Medium-back



Guest



WICKER

FEATURES

- 4-point quadrilateral star aluminum base
- Fixed rotary piston
- Ball bearing for 360° rotation
- Plywood back frame and arms
- Soft black leather upholstery
- Dimensions: 24" W x 24" D x 32.5" H
- Maximum resistance weight: 264.5 lbs.

Available colors:



Black

Options:



Medium-back



Guest



GOETZ

FEATURES

- Medium back
- 4-point pentagonal star base
- Rotating fixed piston
- Soft polypropylene tips
- Tapered snap-in assembly on seat base and chair base
- Structure in polished aluminum finish
- Brown genuine Italian leather seat and backrest
- Dimensions: 23.6" W x 23.6" D x 37.4" H
- Maximum resistance weight: 286.6 lbs.

Available colors:



Light brown

Options:



Executive



Medium-back



Guest



ENEAS GUEST CHAIR



ENEAS

FEATURES

- Low back
- 4-point quadrilateral star aluminum base
- Nitrogen gas pneumatic piston lifting system
- Pneumatic piston locking mechanism at different heights
- Actuation lever
- Polished aluminum arms
- Dimensions: 26" W x 26" D x 35.8" H
- Maximum resistance weight: 352.7 lbs.

Available colors:



Gray padded with
black matte aluminum
base



Blue padded with
gray matte aluminum
base

Options:



Task



Guest

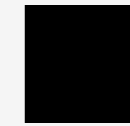


INDI

FEATURES

- Mesh back and upholstered seat
- Metal sled base
- Dimensions: 24.8" W x 24" D x 37" H

Available colors:



Black

- Fabric categories A, B (7% upcharge)
- Fabric categories C, D (10% upcharge)
- Vinyl category A (15% upcharge)
- Vinyl category B (20% upcharge)

Options:



Medium-back



Guest



VERA

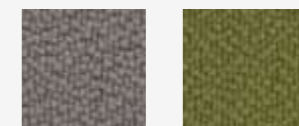
FEATURES

- High back
- Lumbar support
- Folding-type arms
- Synchro mechanism with actuation lever and pneumatic piston lock
- Dimensions: 18" W x 22" D x 40" H
- Maximum resistance weight: 286 lbs.

Available fabric colors for seat:



Blue Wine Red Green



Pearl Olive green

Options:



Medium-back



Guest





VERA

FEATURES

- High back
- Lumbar support
- Folding-type arms
- Synchro mechanism with actuation lever and pneumatic piston lock
- Dimensions: 18" W x 22" D x 40" H
- Maximum resistance weight: 286 lbs.

Options:



Medium-back



Guest





COMFORT GUEST CHAIR



COMFORT GUEST

FEATURES

- Available in fabric and plastic
- Fabric version: Stacks up to 5 chairs high
- Plastic version: Stacks up to 10 chairs high
- Armrests available
- Steel base

Available colors:



Black

Wine

- Fabric category A
- Fabric category B-E (10% upcharge)



COMFORT SEAT & BACKREST

FEATURES

- Fixed arms
- Metal sled base
- Dimensions: 22" W x 18.7" D x 31.8" H
- Maximum resistance weight: 330.6 lbs.

Available colors:

- Fabric and Vinyl Category A
- Fabric and Vinyl Category B (10% upcharge)

Options:



Executive



Medium-back



Guest



XIRIUS

FEATURES

- Available in fabric
- Steel base
- Optional: black or aluminum base

Available colors:

- Fabric Category A
- Fabric Category B (10% upcharge)



MULTIPURPOSE CHAIRS

PROPOS

ALISSA

FEATURES

- One-piece polypropylene body
- Resistant to ultraviolet rays and saline environment
- Ergonomic design
- Dimensions: 21.6" W x 22.4" D x 31.5" H
- Maximum resistance weight: 286.6 lbs.

Available colors:

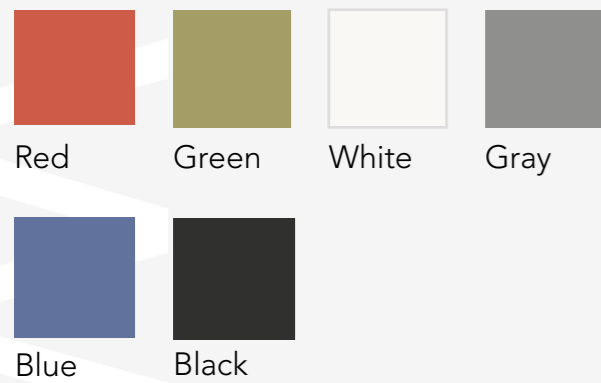


REWIND

FEATURES

- High-resistance polypropylene seat and backrest
- Ergonomic design
- 16-gauge round tubular steel base in black, gray or chrome
- Options: upholstered seat, armrest and/or casters
- Dimensions: 19.3" W x 23.2" D x 18.5" H

Available colors:

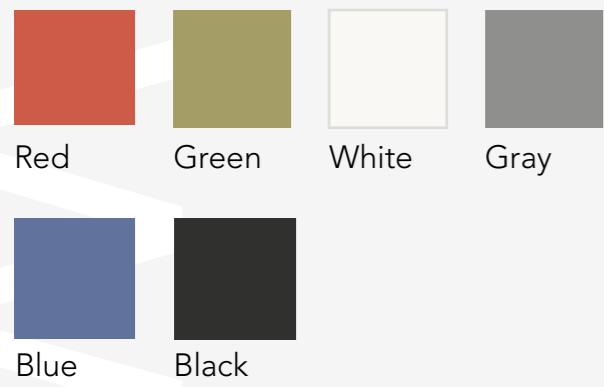


REWIND STOOL

FEATURES

- High-resistance polypropylene seat and backrest
- Ergonomic design
- 16-gauge round tubular steel base in black, gray or chrome
- Options: upholstered seat, armrest and/or casters
- Dimensions: 19.3" W x 19.3" D x 30.7" H

Available colors:



VOLANTI

FEATURES

- Square tubular steel profile structure
- Support footrest with round profile coldroll steel
- Top quality laminated melamine seat
- Imitation grain finish
- Dimensions: 14.6" W x 14.6" D x 30.7" H
- Maximum resistance weight: 330.7 lbs.





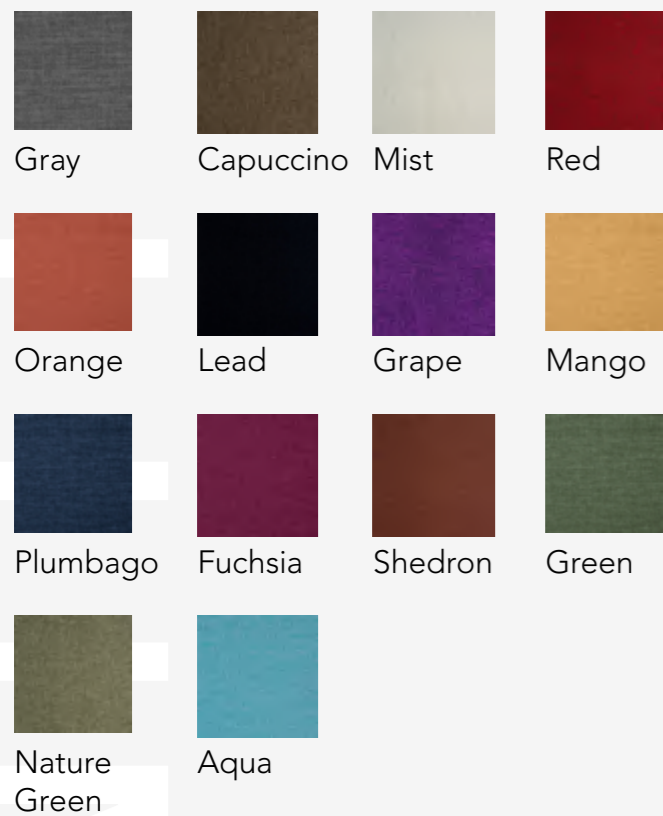
LUMA MULTIPURPOSE CHAIR

LUMA

FEATURES

- Minimalist design
- Aluminum base
- Tablet arm available
- Dimensions: 28.7" W x 25.5" D x 31.4" H

Available colors:



- Fabric categories A, B, C, D -10%
- Vinyl category A - 15% upcharge
- Vinyl category B - 20% upcharge



FABRIZIA

FEATURES

- Padded seat with plywood back frame and interior armrests
- Maximum resistance weight: 264.5 lbs.

GDOH126FA

- American ash wood
- Dimensions: 19.3" W x 19.7" H x 32.7" H

GDOH127FA

- 16-gauge tubular steel base
- Dimensions: 19.3" W x 18.9" D x 32.7" H

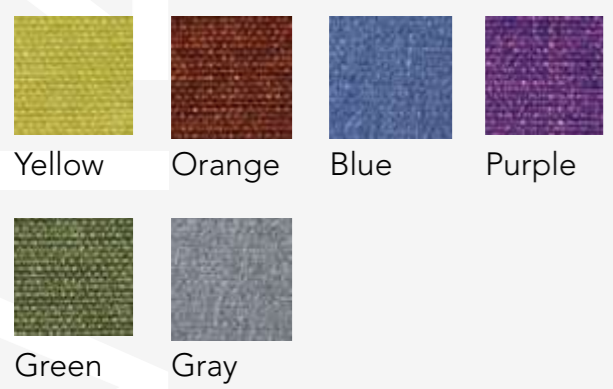
GDOH128FA

- Pyramid-shaped aluminum base
- Dimensions: 19.3" W x 18.9" D x 32.7" H

GDOH128LFA

- Aluminum base
- Dimensions: 19.3" W x 18.9" D x 32.7" H

Available colors:

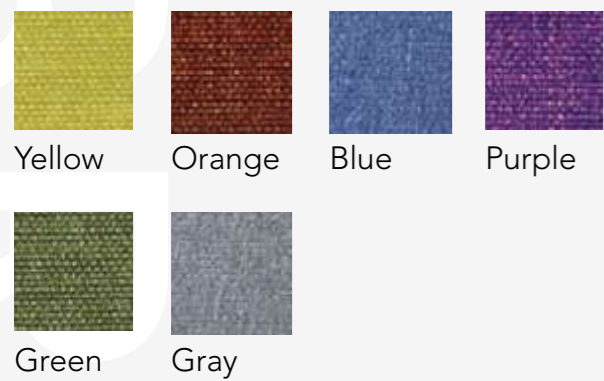


FABRIZIA STOOL

FEATURES

- Round tubular steel base with seat support in steel sole plate
- Round tubular steel spacer and footrest
- Chrome-finish legs
- Padded seat with plywood back frame and interior arms
- Dimensions: 18.9" W x 39" D x 18.9" H
- Maximum resistance weight: 264.5 lbs.

Available colors:





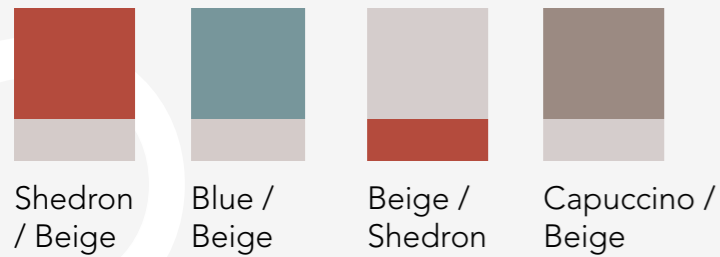
MAGNOLIA MULTIPURPOSE CHAIR

MAGNOLIA

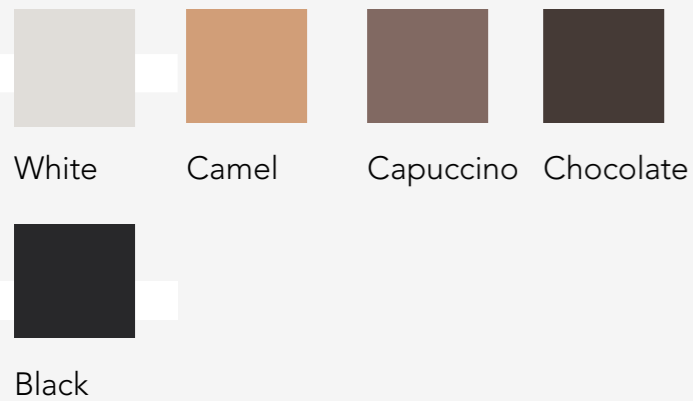
FEATURES

- Ergonomic design
- Outdoor and indoor use
- Resistant to UV rays and saline environment
- Imitation rattan finish
- Fabric colors: blue, beige, shedron, capuccino
- Structure colors: white, capuccino, camel, chocolate, black
- Maximum resistance weight:
 - GDOH7023SFMA: 771.6 lbs.
 - GDOH7023LCMA: 617.3 lbs.
 - GDOH7023CCMA: 396.8 lbs.

Available colors for tapestry:



Available colors for imitation rattan base:



GDOH7023SFMA



GDOH7023LCMA



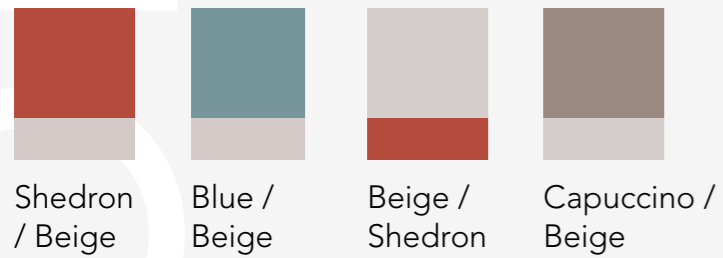
GDOH7023CCMA

MAGNOLIA OTTOMAN

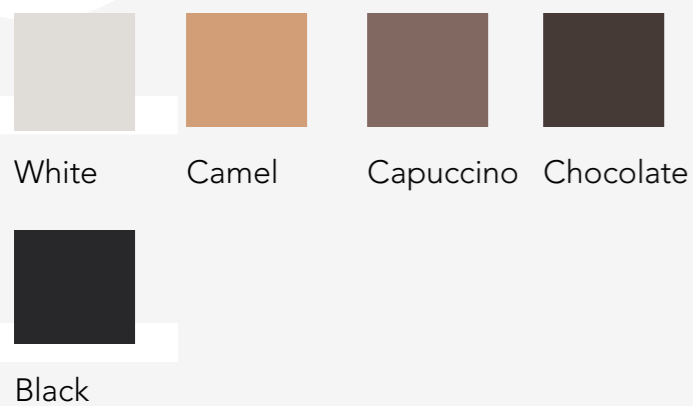
FEATURES

- Ergonomic design
- Outdoor and indoor use
- Resistant to UV rays and saline environment
- Imitation rattan finish
- Fabric colors: blue, beige, shedron, capuccino
- Structure colors: white, capuccino, camel, chocolate, black
- Maximum resistance weight:
 - GDOH7023OTMA: 396.8 lbs.
 - GDOH7023STMA: 396.8 lbs.

Available colors for tapestry:



Available colors for imitation rattan base:



GDOH7023OTMA



GDOH7023STMA



IKA MULTIPURPOSE CHAIR

IKA

FEATURES

- Nesting chair
- Fixed arms
- Fixed or with casters
- Optional tablet arm
- Gray structure
- Dimensions: 22" W x 22" D x 32" H
- Maximum resistance weight: 250 lbs.

Available colors:



Black Red Green

- Fabric Category C, D (10% upcharge)



IKA

FEATURES

- Nesting chair
- Fixed arms
- Fixed or with casters
- Optional tablet arm
- Black structure
- Dimensions: 22" W x 22" D x 32" H
- Maximum resistance weight: 250 lbs.



TABLET ARM CHAIR

FEATURES

- Back and seat available in polypropylene or fabric
- Metal base
- Optional tablet arm (right or left)

Available colors:



Black Blue Red

- Fabric category A



METAL TANDEM

FEATURES

- 3 and 4 seats available
- High-resistance steel base

Available colors:



Steel





DISCOVERY BENCH MULTIPURPOSE CHAIRS

DISCOVERY BENCH

FEATURES

- Minimalist design
- Back and seat in bonded leather
- High-resistance metal base

Available colors:

- Fabric category A
- Vinyl category A, B (5% upcharge)



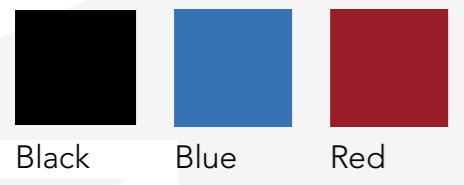
DISCOVERY

COMFORT TANDEM

FEATURES

- 2 and 4 seats available
- Back and seat available in polypropylene or fabric
- High-resistance steel base

Available colors:





LOUNGE &
COLLABORATIVE

LOUNGE &



MATCH CORNER SOFA



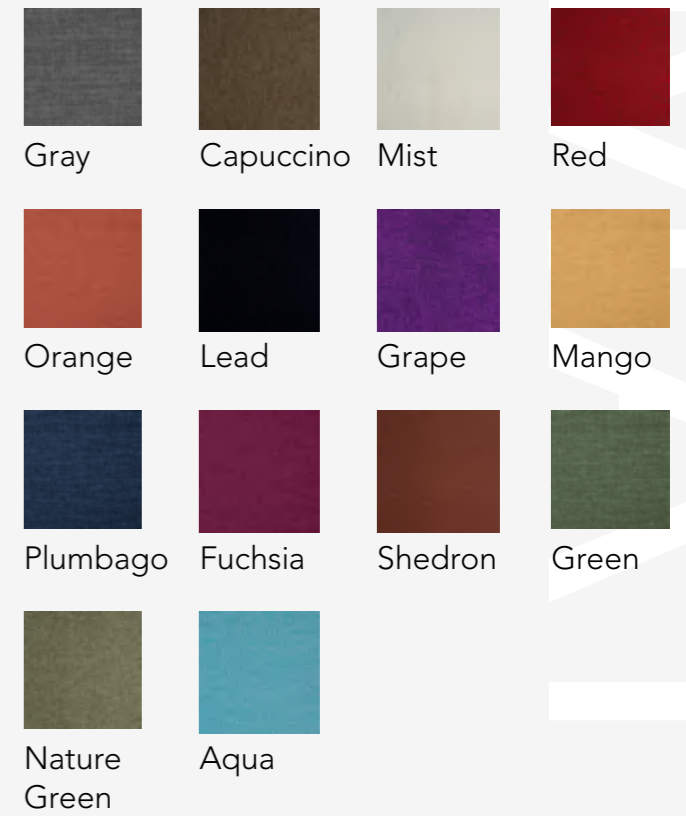
MATCH SOFA

MATCH

FEATURES

- Textured aluminum base
- Work surfaces options: all standard Gebesa laminates

Available colors:





SETI GUEST CHAIR



SETI WIDE GUEST CHAIR



SETI 2-SEAT RECEPTION CHAIR

SETI

FEATURES

- High-resistance metal base
- Black or aluminum base
- Available in fabric and bonded leather
- Dimensions:
 - GUEST: 23" W x 24" D x 33" H
 - 2-SEAT: 45" W x 24" D x 33" H
 - 3-SEAT: 65" W x 24" D x 33" H
 - 4-SEAT: 87" W x 24" D x 33" H
 - WIDE GUEST: 26" W x 24" D x 33"

Available colors:

- Fabric and vinyl category A
- Fabric categories B to E (10% upcharge)
- Vinyl category B (5% upcharge)

Options:



Seti 4-seat reception chair



Seti 3-seat reception chair



SETI BENCH

SETI

FEATURES

- High-resistance metal base
- Black or aluminum base
- Available in fabric and bonded leather
- Dimensions:
BENCH: 23" W x 24" D x 33" H

Available colors:

- Fabric and vinyl category A
- Fabric categories B to E (10% upcharge)
- Vinyl category B (5% upcharge)



Feb 20, Sunday, Feb 17

Comp. eq. $9A + 2B = 10$ $\begin{pmatrix} 9 & 2 \\ 0 & 0 \end{pmatrix}$ $\begin{pmatrix} 10 \\ 0 \end{pmatrix}$ $\begin{pmatrix} 10 \\ 0 \end{pmatrix}$

$X_1 = 10/9$ $X_2 = 0$ $X_3 = 0$ $X_4 = 0$ $X_5 = 0$

$X_1 = 10/9$ $X_2 = 0$ $X_3 = 0$ $X_4 = 0$ $X_5 = 0$

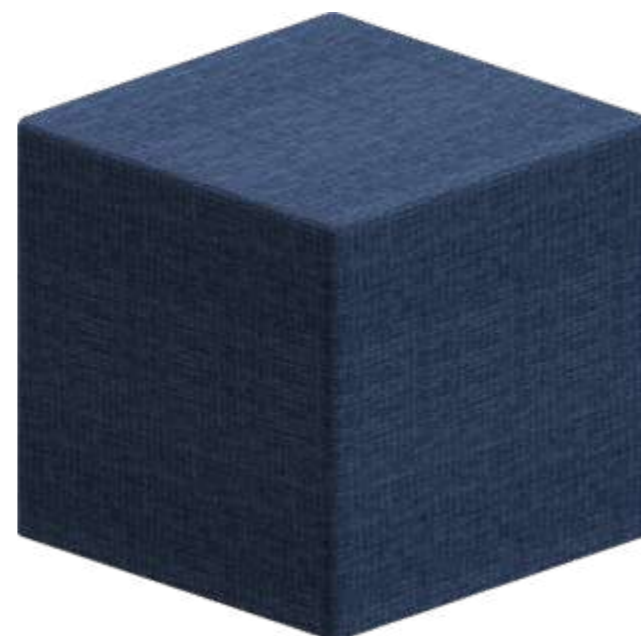
$X_1 = 10/9$ $X_2 = 0$ $X_3 = 0$ $X_4 = 0$ $X_5 = 0$

$X_1 = 10/9$ $X_2 = 0$ $X_3 = 0$ $X_4 = 0$ $X_5 = 0$

OTTOMAN MULTIPURPOSE CHAIRS



MATCH OTTOMAN



MOBILE OTTOMAN



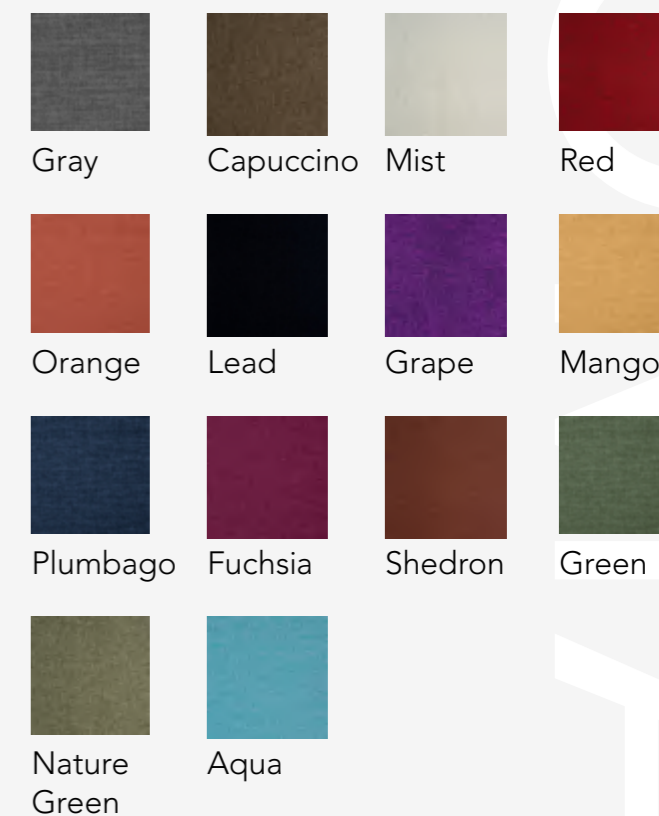
MOBILE ROUND OTTOMAN

OTTOMAN

FEATURES

- Mobile ottoman and mobile round ottoman available with optional casters
- Dimensions:
 - MATCH: 24" W x 24" D x 18" H
 - MOBILE: 20" W x 14" D x 24" H
 - MOBILE ROUND: 20" W x 20" D x 19.5" H

Available colors:





GAMER

GAMER

TORNADO

FEATURES

- High back with headrest
- Mechanism with drive lever and pneumatic piston lock
- Reclining mechanism with tilt-tension regulator and lock
- Adjustable 2D-type arms
- Vinyl in black with blue accents
- Dimensions: 28" W x 28" D x 50" H
- Maximum resistance weight: 331 lbs.

GAMER



VOLCANO

FEATURES

- High back with headrest
- Lumbar support
- Mechanism with actuation lever and pneumatic piston lock
- Reclining mechanism with tilt-tension regulator and lock
- Padded and upholstered arms
- Vinyl in black with red accents
- Dimensions: 24" W x 24" D x 47" H
- Maximum resistance weight: 331 lbs.

GAMER



BLIZZARD

FEATURES

- High back with headrest
- Lumbar support
- Mechanism with actuation lever and pneumatic piston lock
- Reclining mechanism with tilt-tension regulator and lock
- Padded and upholstered arms
- Vinyl in black with white accents
- Dimensions: 24" W x 24" D x 47" H
- Maximum resistance weight: 331 lbs.



GAMER



SOFAS

S
O
F
A
S



ARM CHAIR



LOVESEAT



SOFA

PIERO

FEATURES

- Available in bonded leather
- Chrome base
- Dimensions:
 - ARM CHAIR: 38" W x 35" D x 34" H
 - LOVESEAT: 61" W x 35" D x 34" H
 - SOFA: 83" W x 35" D x 34" H

Available colors:

- Vinyl category A
- Vinyl category B (5% upcharge)



SOFA



LOVESEAT



ARMCHAIR

JET

FEATURES

- Available in fabric and bonded leather
- High-resistance metal base
- Dimensions:
 - ARM CHAIR: 34" W x 31" D x 29" H
 - LOVESEAT: 61" W x 35" D x 34" H
 - SOFA: 81" W x 31" D x 29" H

Available colors:

- Fabric and vinyl category A



PRISMA SOFA



ARMCHAIR



LOVESEAT



SOFA

PRISMA

FEATURES

- Available in fabric and bonded leather
- High-resistance metal base
- Dimensions:
 - ARM CHAIR: 38" W x 31" D x 32" H
 - LOVESEAT: 61" W x 31" D x 32" H
 - SOFA: 85" W x 31" D x 32" H

Available colors:

- Fabric and vinyl category A



SOFA



LOVESEAT



ARMCHAIR

COMFORT

FEATURES

- Minimalist design
- Available in fabric and bonded leather
- Dimensions:
 - ARM CHAIR: 34" W x 31" D x 34" H
 - LOVESEAT: 57" W x 31" D x 34" H
 - SOFA: 81" W x 31" D x 34" H

Available colors:

- Fabric and vinyl category A

Gebesa
CREATING AMAZING SPACES